

The Influence of Poverty, Unemployment, and Economic Growth on the Human Development Index (HDI) in East Java Province 2020-2023

Nadiah Awary^{1*}, Aprillia Nilasari²

Department of Economics, Faculty of Economics and Business, Universitas Negeri Surabaya, Indonesia

Corresponding Author: Nadiah Awary nadiah.21018@mhs.unesa.ac.id

ARTICLE INFO

Keywords: Human Development Index, Poverty, Unemployment, Economic Growth

Received : 15, March

Revised : 29, March

Accepted: 20, April

©2025 Awary, Nilasari: This is an open-access article distributed under the terms of the [Creative Commons Atribusi 4.0 Internasional](https://creativecommons.org/licenses/by/4.0/).



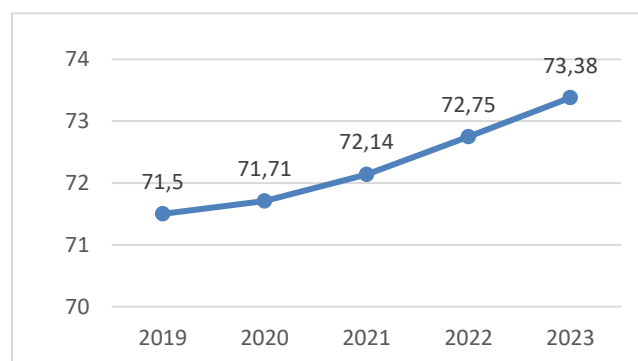
ABSTRACT

This study analyzes the effect of Poverty, Unemployment, and Economic Growth on the Human Development Index (HDI) in East Java Province for the period 2020-2023. HDI reflects welfare based on life expectancy, average years of schooling, and per capita expenditure. However, these three variables show fluctuations. The Central Statistics Agency (BPS) provided the data for this study and analyzed using panel data regression analysis with the Fixed Effect Model. The results showed that poverty and unemployment had a significant negative effect on HDI, while economic growth had a significant positive effect on HDI. Simultaneously, poverty, unemployment, and economic growth have a significant influence on HDI in East Java Province for the period 2020-2023.

INTRODUCTION

Human development is one of the main indicators of a country's development. A country is said to be developed not only based on gross domestic income, but also life expectancy and the achievement of public education (Laisina et al, 2015). The main concept of human resource progress is to place people as the nation's assets, which encourage the improvement of community welfare through growth in various sectors, such as economic, social, political, cultural, and environmental (Normalia, 2022). The community is not just an object of development, but also an actor who can contribute to local and regional progress, which represents national progress at the macro level (Mohammad, 2015).

In 1990, the United Nations Development Program (UNDP) published the Human Development Index as an indicator to assess the level of success of a country in developing and improving the welfare of its population. HDI is used as a measure of the achievement of the quality of human resources based on various levels of individual welfare. HDI is calculated from literacy and longevity rates in the health sector, average years of schooling and school participation in the education sector, as well as an approach to community economic growth, namely per capita income.

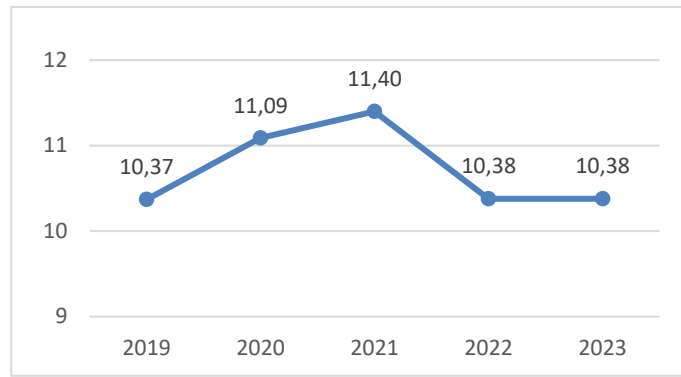


Source: (BPS, 2024), data processed

Figure 1. Percentage of HDI in East Java Province 2019-2023

Based on Figure 1, it is stated that the HDI rate in East Java Province showed an increase from 2019-2023. In 2019 the HDI figure was 71.5% and increased by 73.38% in 2023. This progress in the quality of human resources in East Java Province is getting better every year, which is influenced by several factors such as poverty, unemployment, and economic growth. In Indonesia, human development and poverty alleviation are equivalent terms. The main challenge in regional development efforts and poverty reduction is the low quality of productive forces and facilities for the community, both in health, education, and infrastructure.

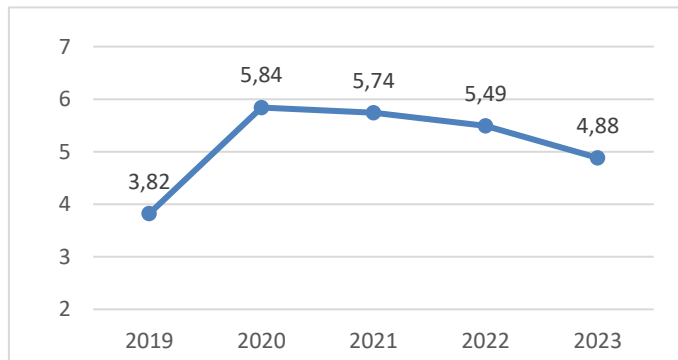
Seen from the average length of schooling in East Java which only reached 7.94%, it can be stated that the level of education in East Java is quite low, so the quality of human resources is not optimal (BPS, 2023).



Source: (BPS, 2024), data processed

Figure 2: Poverty Rate in East Java Province 2019-2023

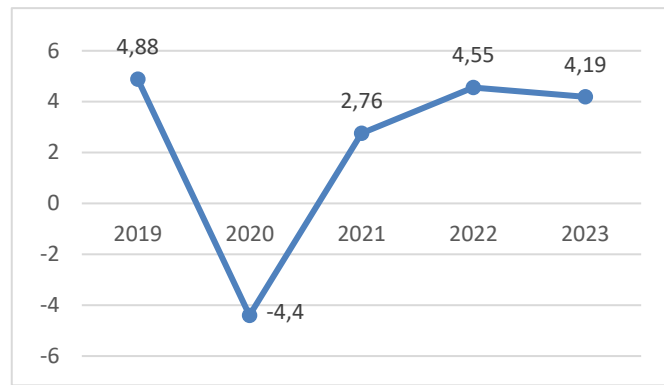
Based on Figure 2, it is stated that the poverty rate in 2020-2021 experienced a fairly high increase compared to 2019, but during the period of economic recovery the poverty rate decreased again, almost reaching the rate in 2019. The ups and downs of the poverty rate show a trend that tends to fluctuate. This happened because in 2019-2020 East Java became an area affected by the Covid-19 pandemic, so that many people lost their jobs and a decrease in economic activity which indirectly reduced people's income, as well as an increase in unemployment, which resulted in an increase in the poverty rate.



Source: (BPS, 2024), data processed

Figure 3: Unemployment Rate in East Java Province 2019-2023

Based on Figure 3, it is stated that the unemployment rate is still quite high and fluctuating, which has experienced several up and down phases. This condition shows that from 2020-2023, efforts to reduce the unemployment rate have not achieved the same results as in 2019. However, with the economic stimulus from the government, as well as the number of companies that have started operating again, the unemployment rate has decreased along with the increasingly stable economy. The Central Bureau of Statistics (BPS) states that if economic growth increases, of course the level of people's per capita income will increase, with the increase in per capita income, consumption will also increase, and in the end the level of welfare will also increase.



Source: (BPS, 2024), data processed

Figure 4. Economic Growth Rate in East Java Province 2019-2023

Based on Figure 4, it can be stated that economic growth experienced a significant decline from 2019-2020. However, in the 2021-2023 period the economic growth rate began to show an increase. This happened because after the peak of the pandemic in 2021, economic stimulus from the government slowly managed to restore economic activity, increase household consumption, and create jobs. So that in 2021-2023 shows that economic growth is increasingly stable and continues to increase. However, despite the upward trend, the economic growth rate in 2023 is still quite low when compared to 2019.

Based on the above background, the increasing quality of human development in East Java Province shows progress in human quality development. Meanwhile, poverty and unemployment rates show fluctuating trends. In addition, economic growth has fluctuated due to the impact of the Covid-19 pandemic. Although it shows an increasingly stable trend and continues to increase from year to year, the figure has not touched the figure in 2019. This is because there is a period of economic crisis that has a long-term impact, one of which is that the figures that appear are mostly still above the figures in 2019.

Therefore, with the existing phenomenon, the purpose of this study is to analyze the effect of poverty, unemployment, and economic growth on HDI and examine how the three variables simultaneously affect HDI in East Java in 2020-2023. The results of this study are expected to be a reference for local governments in formulating more focused development policies in East Java in order to raise the standard of human resources.

LITERATURE REVIEW

Human Capital Theory

Human Capital Theory stems from the thoughts of Theodore W. Schultz (1961) in his work entitled *Investment in Human Capital*. Schultz argued that human capital, which includes aspects of health, knowledge, and skills, is a form of investment to open opportunities for all individuals or residents. Human capital is one of the factors in determining the level of productivity, supported by physical capital, natural resources, labor, and technology. So that human

capital is believed to have an important role in encouraging the improvement of economic conditions (Schultz, 1961).

According to Todaro (2006), education and health play an important role in shaping high-quality individuals. Educated individuals with good health will be better prepared to become a competent workforce and be able to contribute optimally in increasing productivity. In line with Schultz's view, human capital is a determining factor in driving the economy. So that if this increase is implemented, then more optimal economic growth can be achieved.

H1: Poverty is thought to have a substantial impact on the Human Development Index in East Java province.

Social Democracy Theory

John Locke (in Ayu Santi, 2022) states that social democracy theory argues that poverty is not an individual problem, but a structural problem arising from inequality and injustice in society, caused by limited access for certain groups in society. This weakens the conditions of structural poverty because people lack the social support needed to access opportunities that can improve welfare, thus creating an inherently unequal system where a small minority enjoy wealth and power. However, according to Locke's perspective, the right of every individual to life, liberty and property demands a role for the state in ensuring equal access to education and health as important elements in improving HDI. Inequality in access to these resources leads to a lower quality of life for the poor, which in turn worsens the HDI.

According to Marx (1867), free markets result in greater poverty and exploitation rather than increased social wealth. A just society is one in which people's needs are addressed while also eliminating inequity and exploitation in economic and social connections. (Keynes, 1930) emphasized that the government needs to intervene in the economy, especially by managing demand and conducting government spending to prevent unemployment and poverty.

H2: It is suspected that unemployment has a significant effect on the Human Development Index in East Java Province.

Solow-Swan Theory

The Solow-Swan economic growth theory stems from the thoughts of Robert Solow (1956) in his book Liana et al entitled economic growth theory. In his writing, he explained that the long-term economic growth model is the Solow Growth Model which encourages the improvement of people's welfare through increased income and productivity. In his view, physical and human capital are two important factors that contribute to economic conditions. Solow also emphasizes that economic growth without investment in health and education will only have a temporary impact. In the context of this model, investment in human capital is a key component to creating sustainable economic growth, which will contribute to an increase in HDI.

The higher the quality of human capital in a country, the more likely economic growth is to generate wider benefits. An equitably developed economy allows for greater access to health and education services, and increases people's

purchasing power, which directly drives improvements in people's quality of life.

H3: Economic growth is thought to have a substantial impact on East Java Province's Human Development Index.

H4: It is suspected that poverty, unemployment, and economic growth have a considerable impact on the Human Development Index in East Java Province.

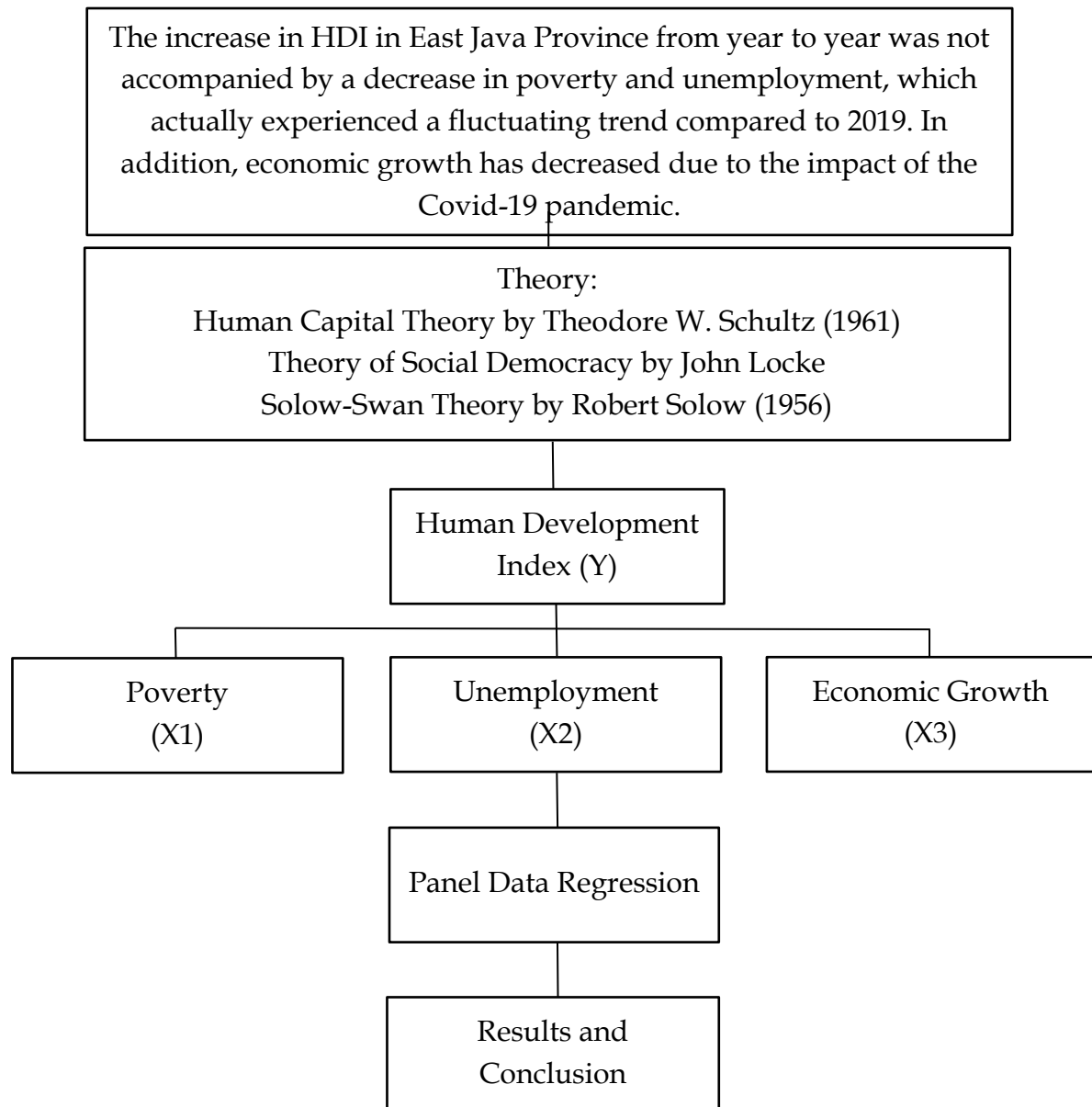


Figure 5. Theoretical Framework

METHODOLOGY

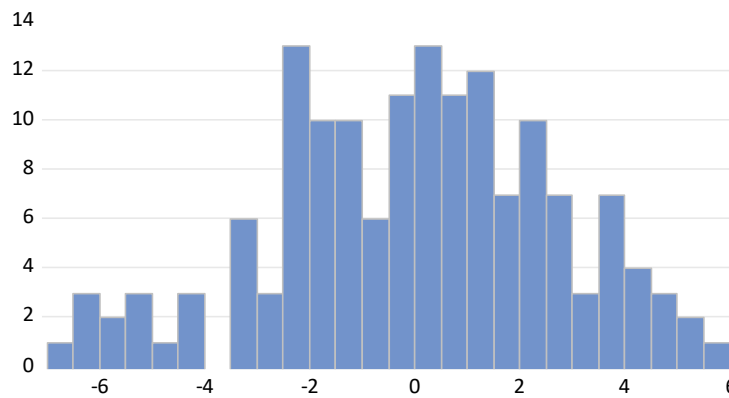
This study uses a quantitative approach with panel data regression analysis to investigate the relationship between the Human Development Index in East Java Province with Poverty, Unemployment, and Economic Growth during the period 2020-2023. The data used is secondary data obtained from the

Central Bureau of Statistics (BPS) which is then subjected to model selection tests such as the Chow Test and Hausman Test before being analyzed using the Fixed Effect Model (FEM) approach. To ensure the validity of the regression model, a number of classical assumption tests were carried out such as Normality Test, Multicollinearity Test and Heteroscedasticity Test. Using these methods, this study analyzes how economic factors can affect HDI and examines how the three variables jointly affect HDI in East Java 2020-2023.

RESEARCH RESULT

Classical Assumption Test

a. Normality Test



Source: Processed by researchers using E-Views 12 (2024)

Figure 6. Normality Test Chart

Table 1. Normality Test

Jarque-Bera	1.996237
Probability	0.368572

Source: Processed by researchers using E-Views 12 (2024)

Based on table 1, it can be concluded that the data is normally distributed because from the data test results, the Jarque Bera Test value is 1.996237 with a probability of $0.368572 > 0.05$.

b. Multicollinearity Test

Table 2. Multicollinearity Test

	KMK	PNG	PE
KMK	1.000000	-0.508100	-0.289716
PNG	-0.508100	1.000000	0.426314
PE	-0.289716	0.426314	1.000000

Source: Processed by researchers using E-Views 12 (2024)

Based on table 2, it shows that the correlation value of the X1 and X2 variables is -0.508100, X1 and X3 -0.289716, and X2 and X3 0.426314. So that none of these variables > 10 , which indicates that this regression model does not have a multicollinearity relationship between the independent variables.

c. *Heteroscedasticity Test*

Table 3. Heteroscedasticity Test

Variable	Coef.	Std. Error	Prob
_cons	0.711261	0.543074	0.1930
KMK	-0.000310	0.045038	0.9945
PNG	-0.053438	0.030869	0.0862
PE	-1.13E-06	1.89E-06	0.5518

Source: Processed by researchers using E-Views 12 (2024)

Based on table 3, the probability value of variable X1 is 0.9945, variable X2 is 0.0862, and variable X3 is 0.5518. Each variable has a probability value that is > 0.05 . Thus, it can be stated that there is no heteroscedasticity problem.

Hypothesis Testinga. *Regression Test of Fixed Effects Model (FEM)*

Table 4. Linear Regression Test Fixed Effect Model

Variable	Coef.	t-Statistic	Prob.
_cons	83.00621	78.73029	0.0000
KMK	-0.939593	-10.74607	0.0000
PNG	-0.156569	-2.612634	0.0102
PE	8.69E-06	2.361970	0.0199

Source: Processed by researchers using E-Views 12 (2024)

From table 4 above, the multiple linear regression model in the FEM model is as follows:

$$IPMit = 83.00621 - 0.939593 KMKit - 0.156569 PNGit + 8.69E-06 PEit$$

b. *Parsial Test (t Test)*

Partial test results (t test) can be seen in table 4, with the following explanation:

- The Poverty Variable (KMK) has a t-statistic probability value of $0.0000 < \alpha = 0.05$, then H_0 is rejected and H_1 is accepted, which means that partially, poverty has a significant effect on HDI.
- The Unemployment Variable (PNG) has a t-statistic probability value of $0.0102 < \alpha = 0.05$, so H_0 is rejected and H_1 is accepted, which means that partially, poverty has a significant effect on HDI.
- The Economic Growth (PE) variable has a t-statistic probability value of economic growth of $0.0199 < \alpha = 0.05$, then H_0 is rejected and H_1 is accepted. Therefore, economic growth has a significant influence on HDI.

c. *Simultaneous Test (F Test)*

Table 5. F Test Result

F-Statistic	395.6528
Prob (F-Statistic)	0.000000

Source: Processed by researchers using E-Views 12 (2024)

Based on the F-test results, the probability value (F-statistic) is $0.000000 < \alpha = 0.05$, then H_0 is rejected and H_1 is accepted. This means that the variables of poverty, unemployment, and economic growth simultaneously have a significant influence on HDI.

d. *Koefisien Determinasi (R^2)*

Table 6. R2 Test Results

R-Squared	0.993035
Adjusted R-Squared	0.990525

Source: Processed by researchers using E-Views 12 (2024)

Based on the table above, the R-Square value is 0.993035. This means that the variables of poverty, unemployment, and economic growth can explain the HDI variable by 99.3035%, while the remaining 0.6965% is explained by other variables outside the model.

DISCUSSION

The Effect of Poverty on the Human Development Index

Based on the results of the t test conducted on 29 regencies and 9 cities in East Java Province from 2020 to 2023, the Human Development Index is negatively and significantly affected by the poverty variable. There is a probability (t-statistic) of 0.0000 or smaller than $\alpha = 0.05$ with a regression coefficient value of -0.939593. This means that every 1% increase in poverty will cause HDI to decrease by 0.939593%. Conversely, if poverty decreases, the HDI will increase.

This study is in line with the Social Democracy theory which states that inequality in education, health, and the economy results in high poverty rates. High poverty has a negative effect on HDI, because people's limitations in meeting basic needs can hinder human development. Poverty reduction can be achieved through economic growth, in accordance with Social Democracy theory, which emphasizes the expansion of free markets and accelerated economic growth.

The results of this study are in accordance with research by (Handayani et al., 2021), (Febriyanto et al., 2023), (Suhendi et al., 2023), (Saputro, 2022), and (Muhammad et al., 2023) which show a negative and significant correlation between poverty and HDI. In addition, the results of the study contradict research (Shinta et al., 2024) where poverty has no significant effect on HDI in Gorontalo. This section allows you to describe your research findings academically. You may not enter figures related to your statistical tests here; instead, you should explain those numbers here. You should structure your

discussion with academic support for your studies and a good explanation according to the specific area you are investigating.

Meanwhile, research (Sidabutar et al., 2020) found that poverty has a significant positive effect on HDI in Simalungun Regency. Thus the variable X1 (Poverty) is in accordance with the hypothesis. If poverty decreases, the HDI in East Java Province will increase. Vice versa, high poverty will have an impact on the low level of community productivity, low income, and lack of access to education. When people lack education, it will result in limitations in getting a job with an average income. Then, if the community is in an unhealthy condition, it will reduce the quality of work, so that it cannot meet work targets and will cause income to decline. Therefore, the effect of poverty on HDI is inversely proportional or negative.

Effect of Unemployment on Human Development Index

Based on the research results, it shows that unemployment has a negative and significant influence on the Human Development Index. There is a probability (t-statistic) of 0.0102 0000 or smaller than $\alpha = 0.05$ with a regression coefficient value of -0.156569. This means that when the unemployment rate increases by 1%, the HDI will decrease by -0.156569%. Conversely, if the unemployment rate decreases, the HDI will increase.

This research is in line with the Social Democracy theory that considers unemployment as a result of structural inequality and lack of social support. High unemployment hinders the improvement of HDI, as it has an impact on the decline in the quality of education, health, and income of the community. Social Democracy theory emphasizes that unemployment can be overcome by expanding employment through deregulation and increased private investment. The results of this study are in accordance with research by (Rahmawati et al., 2021), (Khairunnisa et al., 2023), (Naibaho et al., 2021), (Sania et al., 2021), and (Yoga, 2024) which show that unemployment has a negative and significant effect on HDI.

The results of this study are different from research conducted by (Astriani et al., 2021) and (Putri et al., 2022) which have unemployment results. does not have a significant effect on HDI. The research by (Khairunnisa et al., 2023) found that unemployment has a significant positive effect on HDI in South Sumatra. Thus the unemployment variable (X2) is in accordance with the research hypothesis. The decline in HDI caused by high unemployment has implications for the low level of labor participation, limited income, and decreased quality of life.

A high unemployment rate makes it difficult for individuals to fulfill basic needs, such as education and health, which directly affects HDI. Meanwhile, if the unemployment rate decreases, it will provide greater opportunities for people to obtain decent work, increase their income, and access better education. This also has a positive impact on health, as financial limitations due to unemployment often hinder access to health facilities. As unemployment decreases, people's welfare will improve in terms of education, health, and quality of life.

Policies on job creation, skills enhancement, and infrastructure development are the main steps to improve HDI. So it can be said that HDI is influenced by the unemployment rate.

Effect of Economic Growth on Human Development Index

Based on the results of the study, it shows that it is significantly and positively influenced by the economic growth variable. There is a probability (t-statistic) of 0.0199 or smaller than $\alpha = 0.05$ or 5% with a regression coefficient of 8.69E-06. This means that if economic growth increases by 1%, HDI increases by 8.69E-06%. Conversely, if economic growth decreases, HDI will also decrease.

This study is in line with the Solow-Swan theory of economic growth which states that investment in human capital, such as education and health, is a major component in creating sustainable economic growth that will have a positive impact on HDI. This study supports the theory, because an increase in economic growth correlates with an increase in people's welfare. The results of this study are in accordance with research by (Larasati et al., 2020), Najmi (2019), and (Fernandes et al., 2022) which have a positive and significant effect on HDI. In addition, these results contradict research (Muhamad et al., 2023) which has the result that economic growth has no significant effect on HDI in West Java. In addition, research by (Cahyanti et al., 2021) found that economic growth had a significant negative effect on the HDI of East Java Province in 2010-2019.

The results show that economic growth has a positive coefficient, which indicates a unidirectional relationship between economic growth and HDI. In other words, when economic growth grows rapidly, it can improve the quality of human development. This is due to an increase in per capita income that allows people to have better access to education, health, and other basic needs. Conversely, if economic growth declines, people's income will decrease, resulting in limited access to education and health facilities. This can have an impact on the decline in the quality of human development.

Economic growth in East Java Province fluctuated from 2019 to 2023. Although it experienced a sharp decline due to the Covid-19 pandemic, which hampered productivity in various economic sectors and had an impact on the low human development rate. However, the economy began to bounce back, as evidenced by the increase in economic growth from 2021 to 2023. Thus, the economic growth variable (X3) is in accordance with the research hypothesis, namely that sustainable economic improvement can encourage an increase in overall community welfare.

The Effect of Poverty, Unemployment, and Economic Growth on the Human Development Index

Based on the results of the study, it shows that the variables of poverty, unemployment, and economic growth simultaneously have a significant influence on the Human Development Index in East Java Province during the period 2020-2023. This is indicated by the probability value (F-statistic) of 0.000000, which is smaller than the significance level $\alpha = 0.05$. Where the three variables together have an influence with a coefficient of 0.993035, which

indicates that 99.30% of the variation in HDI can be explained by the variables of poverty, unemployment, and economic growth.

This study is in line with the Human Capital theory that emphasizes the importance of investment in education and health as the main factors in improving people's productivity and welfare. In addition, this study is also in line with the Solow-Swan theory of economic growth, which states that sustainable economic growth can be achieved through investment in human capital. This suggests that reducing poverty and unemployment, as well as increasing economic growth, are the main steps in improving HDI. Therefore, a development strategy that focuses on improving education, health, and income is a necessary step to improve the quality of human development in East Java Province. The results of this study are in accordance with research by (Maulana et al., 2022), (Baihaqi et al., 2020), (Arifin et al., 2021), (Handayani., 2024), and (Apriliana et al., 2021) which have the result that simultaneously the three variables have a significant effect on HDI.

The results of this study are in accordance with the research hypothesis, namely the simultaneous significant effect of poverty, unemployment, and economic growth on HDI, which shows that improving the quality of human development cannot be achieved without the synergy of these three variables. Where poverty reduction and unemployment require support from sustainable economic growth. Government policy in improving development can be focused on investment in the health sector by expanding access to services through the National Health Insurance (JKN) program that covers the entire community. The government can encourage the implementation of community-based health programs, such as training health cadres who can help with basic health education and treatment. In addition, improving health facilities such as hospitals and health centers in areas that still lack health services. In the field of education, people can benefit from programs such as scholarships, reduced tuition fees through free or subsidized schools, and the Indonesia Smart Card (KIP) program evenly and on target, so that the quality of human resources will continue to improve, which in turn will support human development in a region.

Increased economic growth can reduce the unemployment rate, because an increasing economy indicates that the production of goods and services in the region is increasing. This is because a productive workforce can in turn increase output, consumption and investment. In addition, the government can also improve adequate public facilities so that people can feel common welfare in supporting the increase in HDI in East Java.

CONCLUSIONS AND RECOMMENDATIONS

Based on the results and discussion above, it can be concluded that poverty has a negative and significant effect on HDI, which indicates a negative relationship between poverty and HDI. This means that any decrease in the poverty rate will contribute to an increase in HDI of 0.939593%, and conversely an increase in poverty will reduce the value of HDI in East Java Province. Unemployment also has a negative and significant effect on HDI, indicating a negative relationship between unemployment and HDI. This means that any

increase in the unemployment rate will cause a decrease in HDI by 0.156569%. Vice versa, if the unemployment rate decreases, the HDI in East Java Province will increase.

In addition, economic growth has a positive and significant effect on HDI, which shows that economic growth has a positive impact of 8.69E-06%. Thus, an increase in economic growth will contribute to an increase in HDI in East Java Province, and vice versa, if economic growth decreases, then HDI will also decrease. Together, poverty, unemployment, and economic growth have a significant influence on HDI. This indicates that the null hypothesis (H0) is rejected and the alternative hypothesis (H1) is accepted. Thus, any changes in poverty, unemployment, and economic growth can contribute to changes in HDI in East Java Province.

As for the recommendations from the results of this study, the government needs to implement technical and entrepreneurial skills-based training programs that are directly integrated with industry and the world of work, such as the Link and Match program between training institutions and companies. In addition, the government can expand the Pre-Employment Card program with a scheme that focuses more on the poor and vulnerable groups, so that they can improve their skills and employment opportunities.

ADVANCED RESEARCH

For further researchers, they can add other variables and expand objects and periods to get more varied results and be more precise in choosing variables.

REFERENCES

- Apriliana, S., Priana, W., & Wahed, M. (2021). Analysis of the Effect of HDI, Economic Growth, and Unemployment on the Number of Poor People in Magetan Regency. *Journal of Education and Development*, 9(3), 289-294.
- Astriani, A., Muchtolifah, M., & Sishadiyati, S. (2021). The Effect of Poverty, Unemployment, Economic Growth, and Capital Expenditure on HDI in Nganjuk Regency in 2010-2019. *Syntax Idea*, 3(7), 1523-1532.
- Baihaqi, A. B., & Puspitasari, P. (2020). Analysis of the impact of unemployment, Human Development Index, zakat and GRDP on poverty in Aceh Province. *Journal Publicuho*, 3(2), 177.
- BPS. (2024). Percentage of Poor Population by Regency/City in East Java (Percent). Statistics Indonesia. <https://jatim.bps.go.id/id/statistics-table/2/NDk3IzI=/persentase-penduduk-miskin-menurut-kabupaten-kota-di-jawa-timur.html>
- BPS. (2024). Open Unemployment Rate (TPT) by Regency/City (Percent). Central Bureau of Statistics. <https://jatim.bps.go.id/id/statistics-table/2/NTQjMg==/tingkat-pengangguran-terbuka--tpt--menurut-kabupaten-kota.html>

- BPS. (2024). GRDP at Current Prices by Regency/City (Billion Rupiah). Statistics Indonesia. <https://jatim.bps.go.id/id/statistics-table/2/MzIzIzI=/-seri-2010--pdrb-atas-dasar-harga-berlaku-menurut-kabupaten-kota.html>
- BPS. (2024). Indeks Pembangunan Manusia Menurut Kabupaten/Kota. Badan Pusat Statistik. <https://jatim.bps.go.id/id/statistics-table/2/MzYjMg==/ipm.html>
- Cahyanti, N. D., Muchtolifah, M., & Sishadiyati, S. (2021). Factors of Human Development Index in East Java Province. *Jambura Economic Education Journal*, 3(2), 93-101.
- Dewi, K. S., Primandhana, W. P., & Wahed, M. (2021). Analysis of the effect of economic growth, unemployment, and poverty on human development index in bojonegoro district. *Syntax Idea*, 3(4), 834-847.
- Fernandes, J., & Putra, M. L. (2022). The Effect of Local Revenue and Economic Growth on the Human Development Index in 19 Regencies / Cities of West Sumatra Province. *Journal of Economic Tower: Scientific Research and Studies in Economics*, 8(1), 18-29.
- Febrianto, M., & Esther, A. M. (2023). The Effect of Education Budget, Health Budget, and Poverty Level on Human Development Index in Indonesia. *Journal of Economics Trisakti*, 3(2), 2841-2850.
- Handayani, N. (2024). The Effect of HDI, Economic Growth and Unemployment on Poverty in Regency / City in Central Java Province in 2017-2019. *Diponegoro Journal of Economics*, 11(1), 26-36.
- Handayani, S., & Woyanti, N. (2021). The Influence of GRDP, Poverty, Unemployment, and Capital Expenditure on HDI in 35 Regency / City of Central Java in 2011-2019. *BISECER (Business Economic Entrepreneurship)*, 4(2), 17-26.
- Hauzan, A., Yulmardi, Y., & Hardiani, H. (2021). The effect of economic growth, poverty level, government expenditure, unemployment and local revenue on the human development index in Jambi Province. *E-Journal of Economic Perspectives and Regional Development*, 10(3), 211-222.
- Khairunnisa, I., Yusnita, F., Suryani, I. W., & Panorama, M. (2023). Population, unemployment, poverty on the Human Development Index (HDI) of South Sumatra in 2018-2022. *Scientific Journal of Management, Economics, & Accounting (MEA)*, 7(3), 1735-1750.
- Laisina, R. W. (2015). The Effect of Government Spending in the Education and Health Sectors on GRDP Through the Human Development Index in North Sulawesi 2002-2013. *Journal of Efficiency Scientific Periodical*, 15(4), 192-208.
- Larasati, M., Kiki Asmara, S. E., & Ignatia Martha Hendrati, S. E. (2020). B. THE EFFECT OF ECONOMIC GROWTH AND POVERTY ON THE HUMAN

- DEVELOPMENT INDEX OF EAST JAVA PROVINCE 2008-2019. *Economics and Sustainable Development*, 5(2), 7-7.
- Maulana, I., Salsabila, Z., & Dermawan, D. (2022). The Effect of Poor Population, Unemployment Rate and GRDP on HDI in the Banten Province Region in 2019-2021. *Journal of Ecuilnomi*, 4(2), 164-170.
- Mohammad, T. (2015). Development for Welfare Society in Coastal Area. *Aspirasi*, 06 No.01.
- Muhamad, A. R., & Rahmi, D. (2023). The Effect of Technology, Poverty, Government Expenditure, and Economic Growth on the West Java Human Development Index. *Journal of Economic and Business Research*, 45-52.
- Naibaho, M. M., & Nabila, U. (2021). The effect of gross regional domestic product (GRDP) and open unemployment rate on human development index in Langkat Regency. *Gamma-Pi Journal*, 3(2), 21-26.
- Najmi, I. (2019). Analysis of the Effect of Economic Growth and Local Revenue on the Human Development Index: Panel Data of 23 Districts / Cities of Aceh Province. *Journal of Humanities: Journal of Social Science, Economics and Law*, 3(1), 36-47.
- Normalia, N. (2022). The Effect of Economic Growth and Poverty on the Human Development Index in South Lampung Regency in 2014-2020 from the Perspective of Islamic Economics [UNIVERSITY OF ISLAM NEGERI RADEN INTAN LAMPUNG].
- Putri, N. M., & Muljaningsih, S. (2022). Analysis of the Effect of Unemployment Index, Health Service Index and Education Index on Human Development Index (HDI) in Bojonegoro Regency. *Equity: Journal of Economics*, 10(1), 59-71.
- Sania, L., Balafif, M., & Imamah, N. (2021). The effect of GRDP, open unemployment rate and minimum wage on human development index in regencies and cities of East Java Province. *Bharanomics*, 2(1), 33-46.
- Saputro, M. H. (2022). Analysis of the Effect of Poverty Level on Human Development Index (HDI) with Linear Regression Model (Case Study in North Bengkulu Regency in 2010-2021). *ECOMBIS REVIEW: Scientific Journal of Economics and Business*, 10(2), 809-816.
- Schultz, T W (1961) Invesment in Human Capital In *Nuclear Medicine Communications* (Vol 17, Issue 5, pp. 400-409) <https://doi.org/10.1097/00006231-199605000-00009>
- Shintia. (2023). The Effect of Poverty Level and Economic Growth on Indonesia's Human Development Index. *Civilization Journal of Economic and Business*, 2(1), 77-98. <https://doi.org/10.59001/pjeb.v2i1.57>

- Sidabutar, S., Purba, E., & Panjaitan, P. D. (2020). The Effect of Government Spending on Education and Poverty on the HDI of Simalungun Regency. *Journal of Ecuilnomi*, 2(2), 86-101.
- Suhendi, S., & Astuti, IP (2023). Analysis of the Influence of Poverty Levels, GDP and Government Expenditures in Health and Education on HDI in Papua Province in 2017-2022. *Scientific Journal of Management, Economics, & Accounting (MEA)*, 7(2), 1676-1694.
- Todaro, Michael, Stephen C. Smith. *Economic Development in the Third World*. (Pearson Education Limited). English: 2006), p. 20.
- UNDP (2020). *Human Development Report 2020*. National Unity Development Program <https://hdr.undp.org/content/human-development-report-2020>
- Yoga, GADM (2024). Determinants of Welfare Based on the Human Development Index (HDI) in Bali Province. *Journal of Ekuilnomi*, 6(2), 170-181.